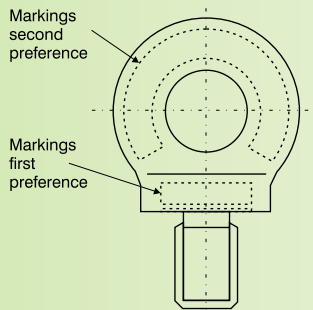


BEAVER LIFTING EYEBOLTS – COLLARED



Beaver Lifting Eyebolts And Eyenuts

Beaver Lifting Eyebolts and Eyenuts come in a range of threads including BSW, UNC and Metric and are predominately used for lifting applications. Eyebolts and Eyenuts both carry the markings as depicted in image below.



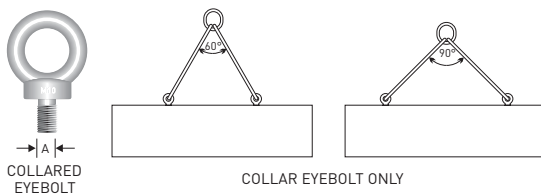
It is recommended that all Eyebolts used for lifting be of forged steel and be equipped with shoulders or collars. The plain or shoulderless eyebolt is fine for vertical loading but as soon as it is loaded at an angle it is subjected to bending and the load it can safely carry is reduced.

Beaver Lifting Eyebolts and Eyenuts

VERTICAL LIFT ONLY
PLAIN EYEBOLT IS ACCEPTABLE



ANGULAR LIFTS
COLLARED EYEBOLT ONLY



The Australian Standard covering collared Eyebolts is AS 2317-1984. The section on "Care and Use of Eyebolts" is taken from that standard.
NB: Only use rated Eyebolts for lifting.

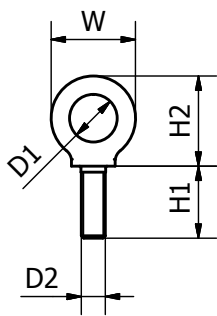
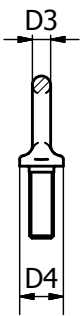
WLL for Class 3 load application as specified by AS 1418, Part 1

Nominal size of Eyebolt	WLL for Class 3 load application as specified by AS 1418, Part 1					
	Single Eyebolt		Pair of Eyebolts (see note)			
	Axial	Trunnion-type mounting	Perpendicular	Included angle 30°	Included angle 60°	Included angle 90°
M12	0.32	0.08	0.16	0.40	0.26	0.16
M16	0.63	0.16	0.32	0.79	0.50	0.32
M20	1.25	0.31	0.63	1.60	1.00	0.63
M24	2.00	0.50	1.00	2.50	1.60	1.00
M30	3.20	0.80	1.60	4.00	2.60	1.60
M36	6.00	1.30	2.60	6.30	4.00	2.50
M42	6.30	1.60	3.20	7.90	5.00	3.20
M48	8.00	2.00	4.00	10.00	6.40	4.00
M56	12.00	3.00	6.00	15.00	9.60	6.00
M64	16.00	4.00	8.00	20.00	13.00	8.00
M72	20.00	6.00	10.00	25.00	16.00	10.00
Reduction factor for single Eyebolt						
	1	0.25	0.25	0.63	0.40	0.25

Beaver Lifting Collared Eyebolts with B.S.W Thread BS 529

Conforms to AS 2317-1984

Code	Size Inches	Finish	W mm	H1 mm	H2 mm	D1 mm	D2 mm	D3 mm	D4 mm	W.L.L Tonne	Pack Qty	Weight Per 100 (kg)	UOM
358010	3/8"	Self Colour	32	17	37	15	9.53	9	21	0.25	400	5.5	Each
358013	1/2"	Self Colour	41	22	42.5	19	12.05	11	28	0.4	150	14.6	Each
358016	5/8"	Self Colour	52	28	58	24	15.88	14	35	0.8	60	30	Each
358019	3/4"	Self Colour	62	33	69	28	19.05	17	43	1.6	40	52.5	Each
358022	7/8"	Self Colour	73	39	80.5	33	22.23	20	50	2	20	90	Each
358025	1"	Self Colour	82	44	92	38	25.40	22	57	2.5	15	106	Each
358028	1-1/8"	Self Colour	92	50	103	42	28.58	25	64	3.5	10	160	Each
358032	1-1/4"	Self Colour	104	55	116	47	31.75	28	71	5	6	260	Each

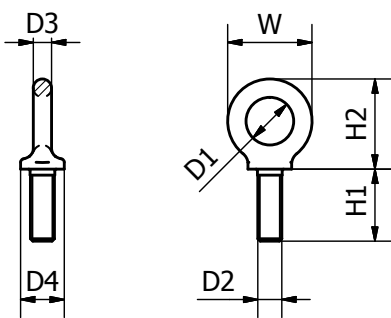


BEAVER LIFTING EYEBOLTS - COLLARED (CONT'D)

Beaver Lifting Collared Eyebolts with UNC Thread BS 529

Conforms to AS 2317

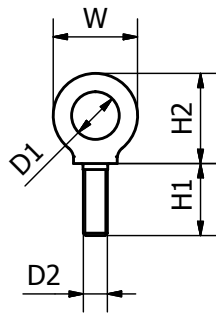
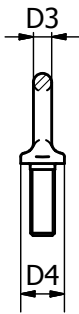
Code	Size Inches	Finish	W mm	H1 mm	H2 mm	D1 mm	D2 mm	D3 mm	D4 mm	W.L.L Tonne	Pack Qty	Weight Per 100 (kg)	UOM
360010	3/8"	Self Colour	33	9	36	15	9.53	9	22	0.25	400	6	Each
360012	1/2"	Self Colour	44	24	48	20	12.70	11	28	0.4	150	15	Each
360016	5/8"	Self Colour	52	14	58	24	15.88	14	36	0.8	60	27	Each
360019	3/4"	Self Colour	66	37	73	28.5	19.05	19	45	1.4	40	54	Each
360022	7/8"	Self Colour	77	20	84	35	22.23	21	52	2	40	85	Each
360025	1"	Self Colour	85	22	94	39	25.40	23	58	2.5	25	113	Each
360032	1-1/4"	Self Colour	106	28	117	48	31.75	29	72	5	6	237	Each
360038	1-1/2"	Self Colour	118	66	131	54	38.10	32	81	7	6	312	Each



Beaver Lifting Collared Eyebolts with Metric Threads BS 4278

"Gold" Zinc Dichromate Finish, Conforms to AS 2317

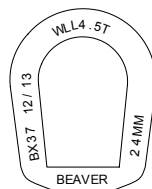
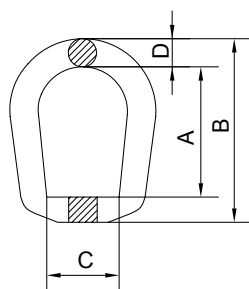
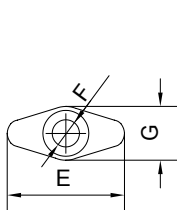
Code	Size mm	Finish	W mm	H1 mm	H2 mm	D1 mm	D2 mm	D3 mm	D4 mm	W.L.L Tonne	Pack Qty	Weight Per 100 (kg)	UOM
359008	8	Zinc Dichromate	33	18	36	15	8	18	22	0.15	400	6	Each
359010	10	Zinc Dichromate	33	18	36	15	10	18	22	0.25	180	6	Each
359012	12	Zinc Dichromate	33	18	36	15	12	18	22	0.4	110	6	Each
359016	16	Zinc Dichromate	44	23	48	20	16	24	29	0.8	80	15	Each
359020	20	Zinc Dichromate	59	32	65	27	20	32	40	1.6	45	38	Each
359022	22	Zinc Dichromate	64	35	73	30	22	34	45	1.6	30	54	Each
359024	24	Zinc Dichromate	77	40	84	35	24	42	52	2.5	10	85	Each
359030	30	Zinc Dichromate	96	51	106	44	30	52	65	4	4	162	Each



Beaver Lifting Eye Nut with Metric Thread

Self Colour Finish, Conforms to AS 2317

Code	Size mm	Finish	A	B	C	D	E	F	G	W.L.L. (tonnes)	Weight (Kg)	UOM
360024	24	Self Colour	77	126	47.5	22	89	24	53	4.5	1.47	Each

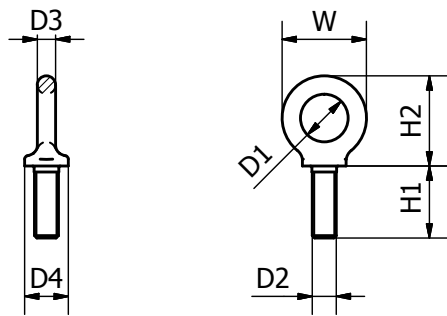


BEAVER LIFTING EYEBOLTS – SHOULDERED

Beaver Metric Shouldered Eyebolts

“Gold” Zinc Dichromate Finish, Conforms to AS 2317

Code	Size mm	Finish	W mm	H1 mm	H2 mm	D1 mm	D2 mm	D3 mm	D4 mm	W.L.L Tonne	Pack Qty	Weight Per 100 (kg)	UOM
359108	8	Zinc Dichromate	36	13	36	20	8	8	20	0.14	400	6	Each
359110	10	Zinc Dichromate	45	17	45	25	10	10	25	0.23	180	11	Each
359112	12	Zinc Dichromate	54	20.5	52	30	12	12	30	0.34	110	18	Each
359116	16	Zinc Dichromate	63	27	61	35	16	14	35	0.7	80	28	Each
359120	20	Zinc Dichromate	72	30	70	40	20	16	40	1.2	50	45	Each
359122	22	Zinc Dichromate	81	35	80	45	22	18	45	1.5	30	67	Each
359124	24	Zinc Dichromate	90	36	90	50	24	20	50	1.8	20	87	Each
359130	30	Zinc Dichromate	108	45	110	60	30	24	65	3.6	4	166	Each
359136	36	Zinc Dichromate	126	54	130	70	36	28	75	5.1	4	265	Each



BEAVER LIFTING EYE NUTS – SHOULDERED

Beaver Metric Shouldered Eye Nuts to DIN 582

“Gold” Zinc Dichromate Finish

Code	Size mm	Finish	W mm	H mm	D1 mm	D2 mm	D3 mm	D4 mm	W.L.L Tonne	Pack Qty	Weight Per 100 (kg)	UOM
359208	8	Zinc Dichromate	36	36	20	8	8	20	0.14	400	5	Each
359210	10	Zinc Dichromate	45	45	25	10	10	25	0.23	180	9	Each
359212	12	Zinc Dichromate	54	52	30	12	12	30	0.34	110	16	Each
359216	16	Zinc Dichromate	63	61	35	16	14	35	0.7	80	24	Each
359220	20	Zinc Dichromate	72	70	40	20	16	40	1.2	50	36	Each
359222	22	Zinc Dichromate	81	80	45	22	18	45	1.5	30	58	Each
359224	24	Zinc Dichromate	90	90	50	24	20	50	1.8	20	72	Each

